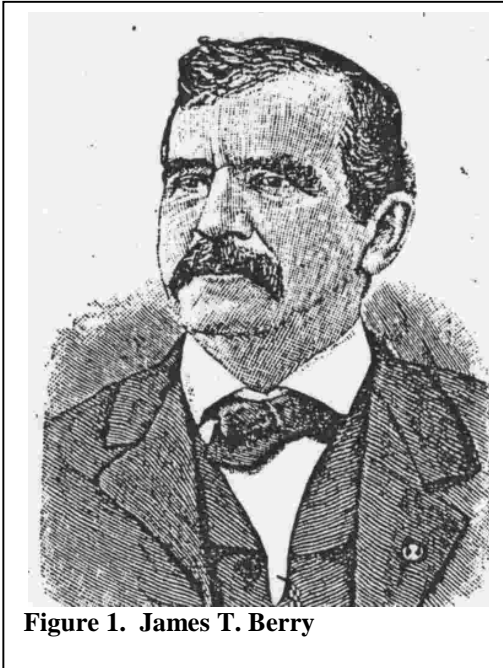


*It takes more than a good resume to get a government contract.*

## **James Tate Berry (1833-1891)**

### **From “Prominent Men of Chehalis”**



**Figure 1. James T. Berry**

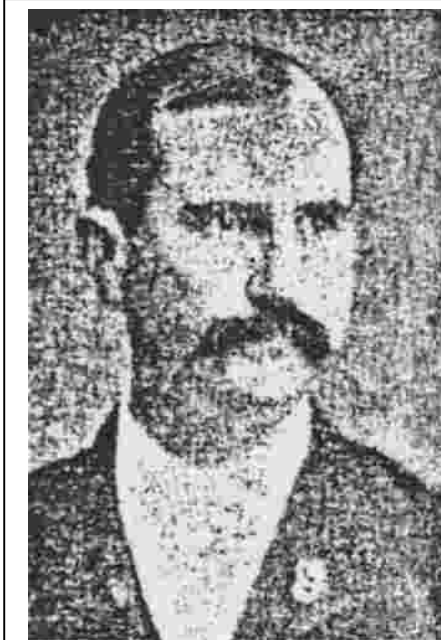
*Capt. James T. Berry, Mayor of Chehalis, was born March 13, 1833, - on a farm near Fulton, Calloway county, Missouri. With his parents he moved to Osage county, Mo., in 1835, where he attended common school until 1851, when he went to Westminster College, Fulton, and took an irregular course, leaving college in 1855. He had in the meantime been thoroughly educated and trained for civil engineering, and upon his return to Osage county was elected to the office of county surveyor, which office he held successfully until the breaking out of the war, when he enlisted in the three months' service, and afterward in the 26th Missouri as private, serving until January 12, 1865, when he was mustered out as first lieutenant. He then enlisted in the service of the state as first lieutenant of Osage and Maries*

*County Rangers, being discharged July 12, 1865, as captain.*

*Captain Berry served in the army of the Tennessee through most of the notable battles of the war, and had sufficient fighting to satisfy him very comfortably since, After the war he taught as principal in the Osage county schools, until his removal to the Klickitat prairie, Washington Territory, in April, 1872, taking a claim there, afterward engaging on government contracts, and has since been United States deputy surveyor. He lived on Klickitat prairie until 1877, when he moved to Chehalis, establishing an office here. He was elected county surveyor for a term in the '70s, and mayor of Chehalis in April, 1889; is a Republican, and has been a member of the Masonic fraternity for thirty five years. Captain Berry was married in March 26th, 1856, in Marks county, Missouri, and has three children. His two sons, John F. and Timothy R. Berry, are both civil engineers, and are associated with him in business.*

## From “History of Washington”<sup>i</sup>

*Newland, Berry & Co. are real-estate dealers, insurance brokers, surveyors and conveyancers of legal documents at Chehalis, Washington. The two members of the above firm are: J. T. Newland, City Treasurer; S. H. Berry, land agent; and A. Rainey, Notary Public. This well known bureau was first established in 1883, under the style of Berry Brothers. Captain James T. Berry, now deceased, being the senior and leading member. The latter was one of the most prominent and progressive men of the city where he resided from 1872 until the time of his demise. He was a civil engineer by occupation,*



**Figure 2 Samuel H. Berry,** Journal of the State Constitutional Convention 1889, B. P. Rosenow, Seattle, 1962

*served as County Surveyor, and also filled the city’s civic chair in 1889. The present firm was established in 1892, and they do a general real-estate business, handling some of the choicest land in Lewis and adjoining countries; also buy and sell city property, locate loans, pay taxes, take charge of property for non-residents and represent a large number of the best fire companies.*

*Samuel H. Berry as born in Osage County, Missouri, August 22, 1849, a son of John and Margaret (Galbreath) Berry, natives of Kentucky, and both descendants of colonial settlers. Captain John Berry, the father of our subject, was a soldier in the famous Black Hawk war, and the family were a well known and influential one in Kentucky during the latter part of the seventeenth century. Grandfather Richard Berry partially reared the mother of our illustrious and martyred President, Abraham Lincoln. Captain John Berry was a Missouri pioneer of 1833, and his death occurred in 1853. His wife survived until 1872, when she also passed to the higher life.*

*Samuel H. Berry was reared and educated in his native State, where he was engaged in teaching many years, and during that time also made civil engineering a special study. In 1872 he was elected County Surveyor of Osage County, and in 1876 was again elected to that office. In May, 1881, he came to Chehalis, Washington, on a Government survey, in which he was employed three years, although in 1882 he was elected County Surveyor for a term of two years. Mr. Berry also followed teaching in the county; in 1884 was elected County Auditor, re-elected in 1886; in 1889 was a member of the Constitutional Convention, and in 1888 was also appointed Chief Clerk in the Surveyor General’s Office.*

*Politically, Mr. Berry affiliates with the progressive wing of the Democratic party, and socially holds a membership in the Encampment degree of the I. O. O. F. of which he has been District Deputy Grand Master, and is also District Deputy of the A. O. U. W.*

*December 24, 1872, he was united in marriage to Miss Ida B. Rainey, a native of Missouri, and a daughter of Dr. L. Rainey, an early pioneer of North Carolina and*

*Missouri. Mr. And Mrs. Berry have had three children: Maggie Isabel (deceased),  
Mand P. and John L.*



---

<sup>i</sup> Hines, H. K. (Harvey Kimball), 1828-1902, "**An Illustrated History of the State of Washington**": containing a history of the State of Washington from the earliest period of its discovery to the present time, together with glimpses of its auspicious future, illustrations and full page portraits of some of its eminent men and biographical mention of many of its pioneers and prominent citizens of today: Chicago: Lewis Publishing Co. 1893.