

It takes more than a good resume to get a government contract.

Frank Winslow Conn (1860-....)

From: Norwich University, 1819-1911.

CLASS OF 1881.

FRANK WINSLOW CONN, C. E.

Frank W. Conn, son of Dr. Granville P. Conn, '54 and Helen Mary (Sprague) Conn, was born in East Randolph, Vt., April 27, 1860. In 1866, his parents removed to Concord, N. H., where he prepared for college in the public schools and under the tutorship of Moses Wilson. He entered the sophomore class of the University, Aug. 29, 1878 and graduated B. S. in C. E. in 1881; was a corporal and first sergeant in the corps of cadets; member of the A. S. P. Fraternity.

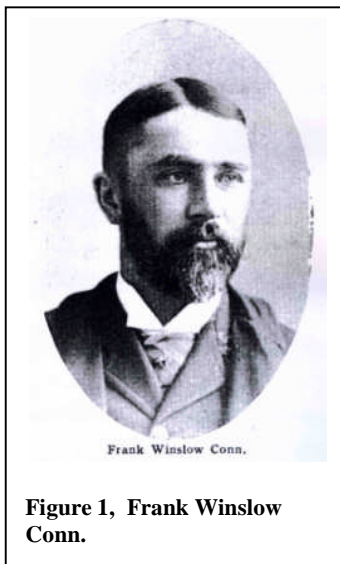


Figure 1, Frank Winslow Conn.

He was assistant engineer on the Texas Pacific R. R., for General Dodge, '51, on construction work in Texas and New Mexico during 1881-82; was division engineer on the Deming, Silver City & Pacific R. R., 1882-83; was assistant engineer on construction work for the Mexican Central R. R., 1883-85. In this last year, he went to Guatemala, arriving there in the midst of a revolution and on the day President Barrios was killed. This revolution stopped all railroad construction and, for some time, he was variously employed. Upon the restoration of order in the country, he entered the employ of the Guatemala Central R. R. He was soon promoted chief engineer and held the position until 1888, when he left the country for Hamburg, Germany, to enter the employ of a company which was to construct a railroad in the valley of the Congo River in Africa. Upon arriving in Germany, he found the company was unable to carry out its project in Africa; and he soon returned to his home in New Hampshire.

During 1888-89, he was employed by the Montpelier & Wells River R. R., on the location and construction of the "switch backs" to the granite quarries in Barre, Vt.; also on preliminary surveys for a railroad from Warren, N. H., to the top of Mt. Mossilauke. He was superintendent of railway construction for the Chilian government, 1889-91; was engaged in

irrigation and mining work with headquarters in Walla Walla and Portland, Oregon, 1891-05. In this last year, he went to Costa Rica, as chief engineer and superintendent for a 'company, having large real estate and mining interests in that country. In 1903, he returned to the United States and became chief engineer for the Transit Finance Co. of New York and Philadelphia, retaining this position until 1907. During 1908-09, he was engaged in examining mines and timber lands in Mexico and Central America. Since 1909, he has been engaged as a consulting engineer at Portland, Oregon. He is a member of the American Society of Civil Engineers.

He was married March 6, 1890, to Minnie Augusta Miller of Nevada City, California.