

**Short Biographies S - Z**  
**of All of the Surveyors and Individuals**  
**Associated with the General Land Office**  
**in Idaho, 1851-1910**




---

<b>Typical Format</b>		Photo
<i>Born-Died</i>		(if available with permission to post)
Political Affiliation, if known		
Type of Surveyor		Credits and sources for photos can be found in the Photo Section.
First Contract or Engagement	Year	
	to	
Last Contract or Engagement	Year	

---

**Samms, Virgil**  
**W.**

---

S G  
 Surveyor General 1921  
 no more

---

**Sams, William** ID PLS 74.  
**B.**

IAA  
 Special Instructions 1907  
 to  
 no more

---

**Schermerhorn,  
Franklyn B.**

USDS  
Special Instructions 1899  
to  
no more

---

**Schlegal, Alexander** Born in Switzerland

Ch Clerk  
Chief Clerk 1903  
to  
no more

---

**Scholl, Louis**

Dr/Clerk  
Clerk 1874  
to  
no more

---

**Scott, Robert F.** Lived in Helena, Montana in 1901

USDMS  
Mineral Surveys 1901  
to  
no more

**Scowden,  
Leopold  
Alexander  
"Leo"**

1848-1926

USDMS

Mineral Surveys

to

no more

Member AIME. Born in Cincinnati, Ohio, Leo was still living with his parents in 1870. He was in Alameda and Sacramento, California from 1876-79 and surveyed the townsite of Mono, California in 1880, the site of Bunker Hill Mine. He lived in Shoshone County, Idaho in 1887 when he was appointed a USDMS in Idaho. There is no record of a survey by him in Idaho. Leo spent the rest of his career as a civil engineer working for mining interests all over the world. He traveled to Europe, South Africa, Brazil and Central America. He noted that by 1914, he had crossed the Atlantic 25 times on mining business.

**Scully, Viola  
Theresa Miss**

1869-1949

Dr/Clerk

Clerk

1899

to

no more

Viola was born in Nebraska and worked in a bank in Moscow, Idaho before coming to Boise in 1898. She took the Civil Service Stenographer's Test and was assigned to the Surveyor General's Office. She married the Idaho Surveyor General, Ernest George Eagleson, in 1907. They continued in Idaho until their deaths.

**Sears, Charles  
Elmore**

1850-1935

Dr/Clerk

Clerk

1901

to

no more



Charles was born in New York City, and stayed there through public schools. He attended New York City University in 1867 and Cornell from 1868-69, but did not graduate. In 1875, he applied unsuccessfully to President Grant for a commission as a Second Lt. in the Cavalry, stating he attended Cornell, had 3 years of Nevada life, and had studied for 2 years.

1890

By 1876, he was a designer in Oakland, and a civil engineer in 1877 in Red Bluff. He was in Boise as a civil engineer in 1880 and married Carrie Randall in The Dalles, OR in 1881. His only Contract was in the Columbia Gorge in 1882-83 for 3 fractional townships across the Columbia from Multnomah Falls. Alexander McAndrew was a compassman for that survey, and it is unknown whether Sears was there at all. He reestablished the North 2 miles of the West line of T2N R5E, because he did not find any of the corners of John Trutch set in 1856. His bearing was more than a degree off to the East, and Jerry Olson found Trutch's township corner in 1966 some 300 feet West of the one set by Sears. All townships after Sears were surveyed from Sears' corner, so they are probably correct. Jerry monumented Trutch's corner for posterity.

Charles, and/or Alexander McAndrew, stubbed all the work, but otherwise it was not bad. He was a draftsman for the OR&N RW in Portland in 1882; a surveyor in Olympia in 1885; a civil engineer in Seattle in 1887; surveyor for 13 plats in Pierce County in 1887-88; the City Engineer of Puyallup in 1888-89; a U. S. Deputy Mineral Surveyor of 15 Mining Claims at Cle Elum in 1889; a clerk in the NPRR Land Dept. in 1890; a surveyor of 12 Mining Claims at Similkameen in 1888-91; a resident of Walla Walla in 1892; a civil engineer in Wasco, Oregon in 1900; the author of a map of Dallas, Oregon in 1903; and a draftsman in Oakland, California from at least 1906-11.

He had money problems in 1889, and was sued for foreclosure. His wife died in Oakland in 1916, and he was living with his daughter, Pearl, in Alameda in 1930. His daughter Bessie's husband was killed in a hunting accident in Escondido in 1924, and Charles moved to Beverly Hills sometime after 1930 to live with her, and died there in 1935.

---

**See, John**

**Wesley**

1882-1952

USDS

Special Instructions 1909

to

no more

Born in Nebraska, John was still living at home and attending school at age 18 in 1900. He moved to Idaho by 1907 where he married Emaline Josephine Winslow in Ada County, and they had 3 children. John received a Contract by Special Instructions in 1909 to survey an island in the Snake River in T10S R24E, and he used his brother Carlos as a one of the chainmen. In 1910, he was listed as a civil engineer in irrigation works out of Heyburn, Idaho. John changed careers to become a consulting architect in Burley, Idaho in 1918 and 1920.

By 1930, John and Emma were apparently separated, and he was a "survey man" in a boat yard in Gasconade, Missouri. His life further deteriorated, because in 1935 he was an inmate in the Multnomah Poor Farm in Troutdale, Oregon. He apparently lived there until he died there in 1952. Emma moved to California, where she was doing menial jobs, but near a daughter.

---

**Sensenig,** Born in Pennsylvania  
**Emerson S.**

1882-1952

Dr/Clerk

Clerk 1903

to

no more

---

**Shaffner, Ira F.** ID PLS 60.

Dr/Clerk

Clerk 1906

to

no more

---

**Shannon,**  
**James W.**

1857-1932

Rep

USDMS

USDS

Contract 177 1896

to

Contract 202 (with 1899  
 William H. Clarke)

Born in Ohio, the son of a farmer, James married Clara E. Bateman in Ohio in about 1879, and they had three children. He was a farmer in 1880 in Ohio with his in-laws living with them. James was advertising as a surveyor and Deputy Mineral Surveyor in Idaho County in 1894. He worked as first a viewer, and then the supervisor of construction, of the road to Elk City in 1895. He was elected Idaho County Surveyor on the Republican Ticket in 1899, continuing through 1900. James received Contract 177 in 1896 for four townships, with three near Grangeville and one North of Orofino.

James was awarded another Contract by the Surveyor General in 1896, but the Commissioner rejected it because there was only one bidder. In early 1899, Walter H. Clarke came to Grangeville as a businessman. James soon formed a partnership with him in the Real Estate business, and then the two of them were awarded Joint Contract 202 for four townships East and North of Grangeville. James surveyed them in 1899, and they were examined by Frank Brigham in 1901 and 1902. The survey was rejected in 1903, and after failing the order to hire a compassman, it was rejected in 1904. Sonnenkalb and Turley surveyed them in 1906.

James never regained his losses from that Contract. In 1908, James traded his farm for a fruit farm in Yakima Valley, and in 1910, he and Clara were living with her parents in King County, Washington. He was a tower tender with a RR in Woodland, California in 1920 and 1930. Clara died in 1926 and James in 1933, and they are buried in Woodland.

**Shannon,  
Walter S.**

USDMS  
Mineral Surveys 1879  
to  
no more

**Sheridan,** ID PLS 166.  
**Nicholas C.**

USDMS  
Mineral Surveys 1901  
to  
no more

**Sherwood,  
Andrew**

*1848-1933*

Prohib  
USDMS  
Mineral Surveys 1901  
to  
no more

Andrew was born in Pennsylvania and attended the Illinois State Normal school and Old Chicago University. He then spent six years with the USGS in the surveys of Ohio and New York before being named Assistant State Geologist for the second geological survey of Pennsylvania. He married Jennie Lind Knapp in Tioga in 1872, and they had five children. He furnished fossil and mineral specimens to the Smithsonian Institution, the American Museum of Natural History, and the Carnegie Museum, and he was the author of geological works and maps and the writer of songs. Andrew was the Prohibition Candidate for U. S. Congress in 1894 and led an expedition to the Yukon in 1898.

The Alaska Mining and Exploration Company was formed in 1897 and the expedition proceeded from May to September in 1898. Hugh Sherwood, Andrews's son, kept a journal. They explored the Klondike but located no new mines and found only a few samples of gold. Andrew was back in Tioga, Pennsylvania in 1900 as a farmer with his family. While there, he was bonded as a USDMS in Idaho in 1901. He came to Dufur, Oregon by 1902 and was listed as retired in Portland in 1910, living with his son Hugh and accompanied by his wife and one daughter. He was a leading contender for the head of Parks in 1906 in Portland. Hugh had been a school principal in Tioga and received a job as a school principal in Portland by 1909.

Andrew was noted as a U. S. Deputy Mineral Surveyor by the Oregon Journal in 1906 and was drilling for oil in Dufur, Oregon in 1907, when oil stock was selling at a fast pace in Oregon. He was also the representative of the Portland Oil and Gas Company in 1909, when they were promoting oil drilling in the Western foothills of the Willamette Valley in Yamhill, Polk and Washington Counties. Andrew was their expert, and he was commenting on the presence of fossils in the local strata, which were similar to the conditions in the California oil fields. This project warranted a full page ad in the Oregonian in 1909. Andrew continued in Portland until Jennie died in 1932 and Andrew died there in 1933.

---

## **Shirley, Frank**

**S.**

USDS

Contract 175 (with 1896

Lyman B. Kendall)

to

no more







They began the survey of the Eastern Boundary of Washington in late summer of 1874. The beginning point was the confluence of the Clearwater and Snake Rivers at Lewiston. Reeves spent two weeks mapping that point, including floating barrels down the Clearwater. They set a stone on the North bank of the Snake, and headed North to the Canadian Border. Charles Denison, a young professor at the University of Michigan, was chosen as astronomer, with Ezra as assistant astronomer. Winter set in in the mountains on the North end of the line before they reached the border, food ran short, and they nearly perished. They did not find the Canadian Border marked, and when returning, it was disclosed that that portion had not yet been surveyed.

The next Contract was another Joint Contract with Reeves for 5 townships Northeast of Washtucna. Reeves surveyed three and Ezra surveyed two. His last Contract in 1875 was a joint one with Samuel Spray for three townships across the River from Hood River, and two townships in Southwestern Klickitat County. Spray surveyed 4 and Ezra surveyed one at Appleton in 1876.

Before moving to Hood River in 1876, he had earlier purchased a large acreage and built a home near there. Ezra planted an orchard, built a store and renewed his health. Except for a term as Register of the Land Office in The Dalles from 1883-86, he stayed on his farm. In 1889, he was Speaker of the House in Oregon, and at one time was a Senatorial Candidate. He was an active Mason, President of the State Horticultural Society and the State Board of Agriculture. He died in Hood River, and at his request, his remains were cremated and cast on the Columbia River. At his request, his wife was disinterred and cremated also. (biography)

---

**Smith, Gordon** ID PLS.  
C.

USDS  
Contract 263 1905  
to

no more

---

**Smith, Howard** Lived in Elk City, Idaho in 1901  
D.

USDSM  
Mineral Surveys 1901  
to

no more

---

**Smith, W. Gus** Lived in Spokane in 1902

USDMS

Mineral Surveys 1902  
to

no more

---

**Smithwick,  
Richard H.**

USDS

Contract 277 USDS  
to

no more

---

**Snow, Claude** Born in New York

**L.**

1882-

Clerk

Clerk 1909  
to

no more

---

**Snow, William  
M.**

USDMS

Mineral surveys 1910  
to

no more

## **Snow, Joseph Marshal**

*1850-1929*

USDS

Comp

Contract 324 (as 1909  
compassman)

to

no more



Born in Maine, Joseph came with his widowed mother to Whidbey Island in 1869, where he taught school for two years. In 1870-71 he was a chainman and axeman for John Cornelius at Sedro Woolley and Snohomish. Joseph was Island County Surveyor from 1872-84. He received a Joint Contract with John Cornelius in 1873 for 7 townships between Mount Vernon and Sedro Woolley, of which Joseph surveyed two townships.

He would continue to participate in 16 Contracts over 33 years in Washington. Again in 1873, he received a Joint Contract with Thomas Reed, Addison Lindley and Henry McCartney for the survey of allotments in several Indian Reservations on Puget Sound. Reed was the ex-Chief Clerk, and the other two were NPRR engineers. Joseph surveyed the Lummi Reservation by himself, and shared the Tulalip and Puyallup Reservation survey with Lindsley and McCartney. In another Contract, he surveyed a township North of Sedro Woolley on his own in 1873. Contract 192 in 1874 for 4 townships on the Yakima Reservation was shared with Ignatius Navarre and Thomas Reed. Joseph surveyed one township. He surveyed T19N R19W North of Aberdeen as part of a Joint Contract in 1875 with Ignatius Navarre.

He spent two years building levees on the Fraser River in Canada sometime during this period. Joint Contract 228 with Ignatius Navarre in 1877 was for 5 townships Northeast of Ellensburg, of which Joseph surveyed 4 townships. Another Joint Contract with Ignatius Navarre in 1877 at Vantage was for three townships, of which Joseph surveyed one township. Joseph was awarded two Joint Contracts in 1880 with Sewell Truax for a total of 45 townships. All were surveyed by Joseph with two being surveyed under Joseph by compassman William Slade. Contract 277 for three townships in 1881 was surveyed and the notes turned in in 1882. One was approved before the Surveyor General's Office burned in 1883.

The Commissioner did acknowledge that Joseph submitted the notes, but since they were not approved, and Joseph did not retain a duplicate, he would have to redo two townships. Since he had obtained other employment, Joseph requested to be relieved of his obligation. It was granted by the Commissioner, but he was not paid for the two townships. In 1882 he entered into a Joint Contract with Arthur White for three townships North of Davenport, and two townships North of Spokane, for which they were sued for the money they had borrowed. Those North of Spokane were surveyed by Snow. Joseph was appointed Seattle City Engineer in July 1882, lasting until August 1883 when he was replaced. During that time, he supervised sewer construction and street regrading. In the summer of 1884, he surveyed 7 mining claims in the Summit District in King and Kittitas Counties.

He received Contract 326 in 1886 for 5 townships Northeast of Rock Island. This was the first Contract of his to be examined. Joseph used David Benton Greenwalt as compassman for all the work, and submitted the notes. The Washington Surveyor General challenged him on his closures, and asked for him to explain himself. He tried but lost, and in 1890, T22N R22E had to be redone in the field by Joseph himself. By 1887 he was in Waterville as a Probate Judge and town supporter. He participated in the removal of the County seat to Waterville, and was elected to the Legislature in 1889. Joseph and his mother platted the town of Chelan Falls in 1891 at the confluence of the Chelan and Columbia Rivers. He married Eliza O'Neil in King County in 1890. Joseph became a land examiner for NPRR in 1896 and Spokane County Engineer in 1902-05.

His last Contract was Contract 622 in 1904 for 3 townships near Tonasket. He was suspended because he did not survey an Indian Allotment, but negotiated Special Instructions to do that portion on per diem. From 1905-09, he was the first State Highway Commissioner for Washington, but was removed and charged with embezzlement of money. He was acquitted by a jury of Grand Larceny, but lost and had to repay the money in a civil suit. In 1910 he was a draftsman for the Spokane County Assessor, and was then County Engineer for Ferry County. He was deputy county engineer in Spokane County from 1926-29, and died in Spokane in 1929 while holding that position. (biography)

---

**Sonnenkalb,  
Oscar**

1847-1928

USDS

Contract 117            1886

to

no more



ID PLS. Born in Germany in 1847 the son of the secretary to the Duke of Altenburg, Oscar received a good education. He graduated from the scientific gymnasium at Plauenm, Saxony, and continued at Dresden Polytechnic, specializing in chemistry. He left a year early to join the military, and served in the Prussion war, ending as a Second Lieutenant.

Oscar continued in the military until 1877, when he came to the United states. Senator Burnside, who he had met in Germany, provided him a job as a draftsman in the patent office. He came to Idaho by 1881 at the invitation of a friend, who was the Registrar at Oxford. He was awarded Contract 117 in 1886 for 9 townships South of Burley and American Falls. This was at the beginning of the new lower rates, and he suffered financially. From 1897 to 1916, with the exception of two years, he was Bannock County, Idaho Surveyor. He was living in Pocatello, Idaho in 1891. (more to

---

**Sparks, Vernon**
**V.**

Dr/Clerk

Special Instructions 1908

to

no more

---

**Spearman,  
Charles W.**

Lived in Rexburg, Idaho in 1900

USDMS

USDS

Mineral Surveys    1901

to

no more

---

**Spedden, E. C.** ID PLS 73. Partner of Fred Erskine in 1906-08 in Grangeville.

USDS  
 HES  
 Special Instructions 1910

to  
 no more

---

**Sperling, Godfrey** ID PLS 61. Born in Illinois and graduated from the University of Illinois in 1895.

1874-1978  
 Dr/Clerk  
 USDS  
 Clerk 1903

to  
 no more

---

**Spofford, Frank Sumner**

1866-1924  
 USS  
 SES  
 Special Instructions 1906

to  
 no more



Born in 1866, graduated from Amherst , Class of 1905. Head of the Direct System in Idaho, at least 1916-1924.

---

**Sprague, Edna  
Miss**

Dr/Clerk  
Clerk                    1897  
  
to  
  
no more

---

**St. Cyr,  
Hyacinthe M.  
"H. M."  
"Henry"**

1843-1937

USDMS  
Mineral Surveys    1899  
  
to  
  
no more



Borne in France, the son of a locomotive engineer, H. M. St. Cyr came to the US. as a child in 1853. He received a good education and began his career as a topographer for a RR in Texas. He married Elmira Leona Graft in 1873 and they had one child. For many years, H. M. was a locomotive engineer on the West and with OR&N in Eastern Oregon.

He was a civil engineer in mining in Boise in 1900, but was living in Weiser, Idaho in 1903 when he shot and killed his former hotel business partner in a disagreement over a team of horses. He was charged with murder, but was convicted of manslaughter and sentenced to ten years in prison and paroled in 1910.

He was an engineer in Seattle in 1912-16, and was an engineer for a lumber company in Bend in 1920. By 1936, H. M. was in Coos Bay Oregon as a car repairman for a lumber company at age 89. Elmira stayed with him and out lived him by many years. He was 5' 6" and had black hair and a black moustache.



**Stahle, Edward  
F.**

North, West, and South Boundaries of Yellowstone  
National Park

USDS

Special Instructions 1901

to

no more

**Stanley, Frank  
D.**

1854-1929

USDMS

Mineral Surveys 1901

to

no more



1879

Born in either Canada, Frank graduated from Dartmouth in 1879 with a degree in civil engineering. He married his first wife, Mary Carleton, in 1880 in Vermont, and then worked in Michigan until 1886. After three children, Mary died in Michigan in 1886. He remarried to Caroline Eliza Adams in 1887, and after a brief stay in Missouri, he came to Spokane in 1889. There he formed a partnership in engineering first with Wilbur Waltman, and then Ulysses

In 1893 Frank operated a shingle mill with Albert O'Donnell, and from 1895-1905 he was a civil engineer and surveyor on his own in Spokane. He surveyed 33 Mining Claims in Washington in Ferry and Pend Oreille Counties from 1898-1904, except for a few North of Cle Elum. Also there were 34 Mining Claims in Grant and Baker Counties in Oregon from 1901-04, nearly all West or Southwest of Sumpter. By 1900, Frank had sired a total of 9 children. Caroline died in 1901 in Spokane, and he married again in 1907 to Anna Lillian Swett in Iowa. They were living in Baker, Oregon from 1908-12 with Frank's youngest son, where Frank worked as a civil engineer.

By 1920 Frank and Anna were in Hermiston where Frank was a farmer. The Oregonian reported in 1925 that Anna filed for Divorce. For some reason, Frank moved to Ware County, Georgia and died there of tuberculosis in 1929, documented by his death certificate. See WA GLO Surveyors for the maintained version of this

---

**Stephens, John****R.**

1868-

SES

USDS

Special Instructions 1892

to

Contract 156 (with 1893

David W. Waite)

(bio for now) John was born in Pennsylvania and graduated from The University of Illinois, Stevens Institute of Technology, in 1878 from the Urbana Campus. He was noted as an alumnus working for Loring and Brown, U. S. Mineral Surveyors, in Wardner, Idaho in 1888. John was appointed a Special Examiner of Surveys to examine Contract 133 of W. Clayton Miller of 24 townships near Coeur d'Alene. The Surveyor General issued him Joint Contracts 154 and 156 with Daniel W. Waite in 1893 for 13 townships South of Lewiston. They were all surveyed by Waite. John went to South Africa in 1895 with engineer George Kyle to be engineers for tunnels in Gold Mining Properties. They were forced to leave the country at the year end 1895 after the Jamieson Raid, in which at least George participated..

---

**Sterling, Robert**

ID PLS 86.

USDS

Special Instructions 1904

to

no more

---

**Stevenson,****Charles****Clifford****"Clifford"**

1854-1938

USDS

USDMS

Contract 158 (with 1893

David O.

Stevenson)

to

no more

ID PLS. Born in Ohio. Living in Boise in 1900 as Charles C. as a civil engineer.

---

**Stevenson,  
Charles  
Coburn  
"Coburn"** ID PLS 27. Born in California, son to Edward  
Stevenson, the Governor of Idaho in 1885. Died of  
rheumaism.  
1862-1898  
Dem  
Ch Clerk  
Chief Clerk 1893  
to  
no more

---

**Stevenson,  
David O.** ID PLS 8.

USDS  
Contract 158 (with 1893  
C. Clifford  
Stevenson)  
to  
no more

---

**Strange, Vivian  
P.** Lived in Gem, Idaho

USDMS  
Special Instructions 1899  
to  
no more

**Straughan,  
Jesse  
Rittenhouse**

1818-1907

Ch Clerk

Chief Clerk 1885

to

no more

Born in Ohio, the father of Joseph C. Straughan, Jesse married Caroline J. Chambers in Ohio in 1843, and they had nine children. He was a civil engineer in 1875 and 1880 in Fort Wayne, Indiana. He built the Pittsburg, Fort Wayne & Chicago RR, and was employed by the State of Ohio in many public works projects. His son, Joseph, the new Surveyor General of Idaho, appointed him as his Chief Clerk in Boise, Idaho in 1885, continuing until 1889. Jesse was a civil engineer in Fort Wayne again in 1900, with his son, Joseph, who had recently been replaced in Idaho as the Surveyor General.

**Straughan,  
Joseph  
Chapman**

1849-1910

Dem

S G

Surveyor General 1885

to

Surveyor General 1893



1888

Born in Ohio the son of civil engineer, Jesse R. Straughn, Joseph was educated in Fort Wayne, Indiana and Delaware, Ohio and became a noted civil engineer. He was involved in the construction of 13 railroads in Ohio, Indiana, Illinois and Mississippi. He married Mary Victoria Shoemaker in 1879, and after two children, she died in Mississippi in 1883. He remarried in 1885 to Alice B. Ramsey, a graduate of Jacksonville Presbyterian Seminary. Alice was a manager of the World's Columbian Exposition at Chicago, and was the founder and first president of the Boise Women's Club.

In 1885, Joseph was appointed Surveyor General of Idaho by newly elected Democrat, Grover Cleveland, and he named his father, Jesse R. Straughn, as Chief Clerk and his sister Alice as a Clerk. He prepared a report to the U. S. Senate in 1889 on litigation and arid lands in Idaho. Joseph was replaced in 1890 with the exit of the Cleveland Administration but returned in 1893 when Grover was reelected, this time without his father. He was noted as a civil engineer in Fort Wayne, Indiana in 1910,

---

**Stuart, James**

ID PLS.

USDS  
Special Instructions 1909  
to  
no more

---

**Sunderlin,  
Charles  
Algernon**

1883-1951

SES

Special Instructions 1909  
to  
no more



Born in Michigan, Charles graduated from high school in Iowa and graduated from the University of Nebraska in about 1905. He was listed as a Special Agent for the General Land Office in Boise in 1909 and was a single lawyer in private practice there in 1910.

---

**Sweet, Carrie  
C. Miss**

Born in Missouri

Dr/Clerk  
Clerk  
to 1889  
no more

---

**Talboy, Walter  
E**

USDS  
Contract 304 (with 1908  
to  
no more

---

**Taylor, Harry  
P.**

Dr/Clerk  
Clerk 1902  
to  
no more

---

**Taylor, John  
M.** Active Mineral Surveyor in 1891, lived in Eagle Rock, Idaho.

USDMS  
Mineral Surveys 1891  
to  
no more

---

**Taylor,  
LaFayette N.** Lived in Hump, Idaho in 1901

USDMS  
Mineral Surveys 1901  
to  
no more

---

**Taylor,  
Rowland  
Corwin  
"Scrappy"** Born in Ohio, lived in Boise, Idaho Was listed as a Special Agent for the General Land Office in Boise in 1909. His death certificated noted him as a lawyer.

*1879-1945*  
SES  
Special Instructions 1909  
to  
no more

---

**Teames,  
George Byron**

1859-1922

USDMS

Mineral Surveys 1883

to

no more



Born in Connecticut, the son of a doctor, George graduated from the Thayer School of Engineering at Dartmouth in 1880 with a B. S. He was an engineer for the WS&SPRR in Pennsylvania, and a USDMS in Idaho in 1883, where he surveyed two Mining Claims in 1884, one in Coeur d'Alene and one in Summit Mining Districts. He was then Stevens County Surveyor in Kansas in 1885.

George went back to school and took up Medicine, but returned to engineering for another 5 years. He married Mary Elma Stamback in Kansas in 1887, and they had one daughter. He went back to Medicine and graduated with an M. D. in 1890 from Columbia University and practiced in New York. He located in Schenectady in 1898 and began his Private practice. George died there in 1922.

---

**Thomas, Mary  
M. Miss**

Born in Pennsylvania

Dr/Clerk

Clerk 1901

to

no more

---

**Thompson,  
Allen M. "Al"**

1837-1889

USDS

Contract 2            1867

to

no more

Allen was born in Ohio as the brother of future Deputy Surveyor, David P. Thompson. David was in Oregon in 1853, and Allen was in Oregon by 1859, when he was a chainman for his brother on the extension of the Baseline to Umatilla. He was a chainman for Nathaniel Gates at Hermiston the same year and in 1860 was a chainman for Lafayette Cartee at Hood River. He began his career as a compassman for Lafayette Cartee on Contracts 94 and 96 at Hood River and The Dalles in 1860, surveying many townships. He switched to being a compassman for his brother, David, for several townships at LaGrande in 1863. Lafayette Cartee was named Surveyor General of Idaho in 1866, and Allen followed him to Boise. Allen had received a Joint Contract with his brother and Bynon Pengra in Oregon in 1867, but did not participate in the survey.

Peter Bell, Lafayette's brother-in-law surveyed the Boise Baseline both East and West and the Boise Meridian to the South. Allen surveyed the Prime Meridian North to the Clearwater River and the First Standard Parallel North to the Snake River to the West in 1867. He began with Idaho Contracts 3,5, and 7 in 1867. Allen surveyed Contracts in Idaho from about 1867-1885, and his entries account for 39 pages in the Idaho Index. He was living in Lafayette's House in Boise in 1870, along with Lafayette's brother-in-law, Peter Bell and sister-in-law, Henrietta Bell.

David Thompson was named Governor of Idaho in 1875-76 and joined Allen in Boise. One of Allen's last Contracts in Idaho was to extend the Boise Meridian to Township 60N and survey two adjacent townships. Samuel W. Lackland, an Oregon U. S. Deputy Surveyor, was the compassman. Later surveys note finding almost no corners, and the topog calls do not match at all.

Allen married a hometown girl from Ohio, Mary Ann "Mattie" Martin, in 1875 in Tennessee after an engagement of seven years. He continued surveying Contracts in Idaho until at least 1885, but had returned to live in Salem in about 1880. Cartee left as Surveyor General in 1878. Allen was a boarder in Boise in 1880, probably in Idaho only to do a survey. He died of a stroke in Salem, Oregon at age 52 in 1889. Martha and two sons were living in Pendleton in 1900.



---

**Thompson,  
David Preston**

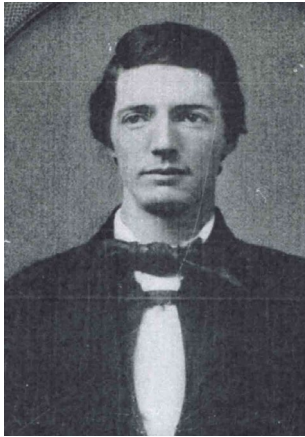
1834-1901

USDS

Contract 17                    1869

to

no more



David was born in Cadiz, Ohio, the son of a miller, was trained as a blacksmith, and walked across the Oregon Trail in 1853. He financed his trip on the Oregon Trail by shepherding a flock of sheep all of the way to Oregon. After cutting wood and working as a blacksmith's assistant, he obtained a job in the winter of 1854 as a chainman for La Fayette Cartee, surveying DLCs along the Willamette River between Portland and Oregon City, and surveying the exteriors of the township at Camas.

He received his first Contract in Oregon, a Claim Contract in 1856, and surveyed claims and townships nearly continuously until 1872, receiving 23 Contracts. When La Fayette Cartee, the old friend of David and his brother Allen, was appointed Surveyor General of Idaho in 1867, both of them started surveying Contracts there. David surveyed Contracts in Idaho from about 1869-1875, totaling about 65 townships, with many of them Indian Allotments.

He used compassmen on much of his work, including USDS John David, USDS John Meldrum, USDS Allen Thompson, USDS Matthew Murphy, and USDS George Newman. David stopped surveying when he was appointed Governor of Idaho in 1875, but Allen continued until at least 1883. David held a Joint Contract with his brother-in-law, John Meldrum and nephew, Rufus Moore in 1879, but did not take to the field himself. Nearly all of David's Contracts were on the East side.

In 1859 he extended the Baseline East to the Blue Mountains, and surveyed the Columbia Guide Meridian North, almost to the Columbia River. Right after that, he was a compassman for Jared Hurd and Hamilton Maxon as part of WA Contract 50 to continue the Columbia Guide Meridian North to the Big Bend of the Columbia River in Eastern Washington. At the crossing of the Snake River, he made an error of 7 chains North by 15 Chains East, that is perpetuated today. He returned in 1861 to again be a compassman for Hamilton Maxon on Contract 60 in Washington. David surveyed portions of 8 townships along the Columbia, across from The Dalles and Boardman. As a Republican, he was the wrong political party to get his own Contract in Washington until after 1861.

David returned from the surveying season in 1861 and married Mary Relief Meldrum in Portland. She was the sister to USDS John Meldrum and USDS Henry Meldrum and the sister-in-law to USDS Rufus Moore. David's political activities included: Oregon State Senator 1866-72; Governor of Idaho Territory 1875-76; Oregon Legislature 1878, 1882, 1889; Mayor of Portland 1879, 1881; Elector and Delegate to the Republican National Convention 1884; Republican Candidate for Governor 1890; Ambassador to Turkey 1892-93; and ten years a Regent for the University of Oregon.

David was an active and industrious businessman, and those ventures included: built the first RR in Oregon, around Willamette Falls at Oregon City; manager of Oregon City Woolen Manufacturing Co. 1866-68; member of the Willamette Falls and Locks Co., which built the locks in 1873; President of the Oregon Construction Co., which built much of the ORN RR; V. P. and a director of ORN RR; mail contracts 1872-78; organizer and President of Oregon Saving Bank; President of Commercial National Bank; and Director of 15 other banks.

In addition to a luxurious house in downtown Portland, David and Mary maintained a large farm at Fishers Landing in Clark County, WA, where their epileptic son, Ralph, spent much of his time until he died there in 1945. David had just started on a trip around the world, when he became ill, returned to Portland, and died there a short time later of anemia, due to stomach issues. The stock of the D. P. Thompson Company would later be valued at more than \$500,000.

---

## **Thompson, Samuel H.**

USDS

Contract 28            1871

to

no more

---

**Thompson,  
William P.**

1822-1907

Ch Clerk

Chief Clerk

1869

to

no more

William was born in New York as the son of an architect, and was still living at home as a clerk in New York City in 1850. He applied for a passport in 1849, and there was a William P. Thompson that kept a diary from St. Joseph Missouri to California via the Oregon Trail in 1850. He also kept a diary on his return home via Panama in 1852. William was in Oregon by 1857 and in 1859-60 he was the Draftsman in the Surveyor General's Office of William W. Chapman in Eugene, OR. He married in 1860 to Priscilla Page, an immigrant from Canada, and they had no children.

He lived in Boise, ID as a deputy Clerk for the District Court in 1867, just two doors from old friend, La Fayette Cartee. Cartee was appointed Surveyor General of Idaho in 1867, and William was named as Chief Clerk. He also was a reportedly excellent draftsman. He held the post of Chief Clerk until 1874 when he was named Register of the Boise Land Office. In 1873, he was noted as a Director of the First National bank of Idaho. William apparently left Boise by 1882, when he had an unclaimed package from his mother. On the side, he had produced a map of Boise in 1871. He was a surveyor for the U. S. in 1900, living with Priscilla in Front Royal, Virginia. He was 5' 7 1/2" tall

---

**Thorn, William  
Henry "Bill"**

1863-1963

USDS

Special Instructions 1897

to

no more



c. 1890

Born in Iowa as the son of a farmer, William was in Iowa in 1870 and 1880; lived in Oklahoma Territory in 1890 and in about 1896; surveyed the Black Hills Forest Reserve in 1899 as a U. S. Surveyor; lived in Clifton, Wyoming as a civil engineer in 1900, living in a tent with his crew; was stationed out of Redlands, California beginning in 1902; and surveyed townships in Montana in 1904.

William married Jessie Grant Emmons in Tacoma, WA in 1908, both for the second time. He surveyed the South and East boundaries of Mount Rainier National Park in 1906 as a U. S. Surveyor. Two of Jessie's cousins were on the Rainier survey crew. He finished the Boundaries started by Abner Dunnington in 1908, acting as an Examiner of Surveys. His survey of the Park was acknowledged by the Surveyor General of California. William was a Special Examiner of Surveys for the GLO in 1908-10, in Washington, Oregon and California at least. He made 26 examinations in Washington from 1909-10 and two in Oregon in 1908.

From 1910 until 1912, he worked for the GLO surveying townships on the Fairbanks Meridian, following the controversy between the USGS and the GLO, where the GLO criticized the work of the USGS for using triangulation. It appears he found no discrepancies in the township exteriors surveyed by the USGS. He writes of his trip to Fairbanks from Seattle as taking a month; via Whitehorse, pulling sleds on the ice over Lake LaBarge, where they had to overnight on the ice without shelter; and via the Yukon River to Dawson, and then to Fairbanks. A boat he was on sank below Lake LaBarge, and they were picked up by a steamer.

From 1912 until 1963 when he died, William lived in Redlands, CA, and from at least 1921-1947 he lived in a house with citrus trees in the back yard. He was retired by 1930. He is the namesake of Thorn Point, Thorn Meadows, and Thorn Meadows Campground, all in the mountains of Ventura California. See WA GLO Surveyors for the maintained version of this information

---

**Tompkins,** Born in Idaho  
**Ruby W. Miss**

1879-

Dr/Clerk

Clerk 1901

to

no more

---

**Towne, Elmer C.** Active Mineral Surveyor in 1891, lived in Rocky Bar, Idaho

USDMS

Mineral Surveys 1891

to

no more

---

**Trask, George R.** ID PLS. Lived in Murray, Idaho in 1891 and Wallace Idaho in 1900. born in Massachusetts. A mining engineer in Wallace in 1900, and died in Wallace.  
*1855-1938*

USDMS

Contract 125 1889

to

no more

---

**Trengove, Samuel R.** Born in England, Living in Mullen, Idaho in 1900. Census in Mariposa, California in 1900. Gold Miner

*1845-*

USDMS

Mineral Surveys 1900

to

no more

---

**Trippet,  
William  
Kennedy Sr.  
"Will"  
1881-1942**

SES  
USDS

Special Instructions 1900

to

no more

Born in Montana, Will attended the College of Montana and then graduated from the University of Michigan in 1902. He was a USDS in Montana in 1903 before being appointed a Special Examiner of Surveys to assist Marion P. McCoy in the survey of Fort Sherman in Idaho in 1904. Will was married to Florence Belle Atwater in Whitefish in 1904, and they lived in Whitefish the rest of their lives and had 8 children.

---

**Trolson, Jacob  
H.**

1860-1928

USDMS

Mineral Surveys 1899

to

no more

Jacob was born in Utah and lived in Austin, Nevada in 1896 when he married Regina Smith and in 1897 when their first daughter was born. He lived in Silver City, Idaho in 1899 as a surveyor and Florida, Idaho in 1900-01 as a surveyor. Jacob moved back to Austin, where he was an assayer in Austin in 1910 and died there in 1928.

---

**Trowbridge,  
William P.**

EX

Special Instructions 1894

to

no more

---

**Truax, Sewall***1830-1894*

Rep

Special Instructions 1868

to

no more



Born in Canada of American parents, Sewell moved with his family to Vermont in 1850, where he attended Norwich University for three years, and graduated in civil engineering. He left in 1851 to engage in surveying for railroads, until 1853 when he came across the Oregon Trail. He worked as a chainman for Ives and Hunt in 1854 in Washington and as a compassman for Anson Henry in 1853 in Oregon.

Sewall then became a compassman for Ives, Hyde and Lake in the Rogue Valley from 1854-55, and after that surveyed three Claim Contracts and four Contracts on his own in Oregon from 1855-58, in the Rogue Valley and the Southern Oregon coast. He served as a Major in the Oregon Cavalry during the Indian hostilities in 1855-56. At one time he was County Surveyor of Jackson County. He was a survey examiner for four Contracts on the Oregon coast in 1857-58. Sewell used small crews from a consistent pool of crewmen, and did the work himself on the surveys.

Sewell returned East to marry Sarah Chandler from Canada in 1861, and returned with his new wife to Jacksonville via Panama. In that year he raised a Company of Volunteers for the Civil War, the First Oregon Cavalry, and was named Captain. He was transferred to Fort Walla Walla as Major in charge, and then to Lapwai, Idaho until 1864. He left the Army and owned a store at Lapwai for several years with his brother Charles. He was awarded a small Contract in Idaho on the Snake River in 1868.

He returned to Walla Walla in 1870 and spent two years as Superintendent of Construction of the Walla Walla and Columbia River RR as surveyed by James Tilton, the first RR in Washington. He then moved to a farm North of the high bluffs above the Snake River, where he invented a grain chute to move his crops to the Snake River from the high prairie, ending at the bottom of the steep bluff, where he maintained warehouses on the Snake River.

From 1865-67 Sewall was the engineer for Wellington Bird for the Lewiston, Idaho to Virginia City, Montana Wagon Road. Lewiston was the Idaho State Capital in 1865, and Sewell was twice dispatched to seize the State records to spirit them away to Boise. His nephew Edson Briggs arrived in 1873, and he and Sewall surveyed several joint contracts until 1880. Sewall also partnered with Levinus Swift and John Snow, and surveyed some on his own. In all, Sewell would be involved in 13 Contracts, totaling 247 townships and approximately 14,000 miles of line. They were almost all in Southeastern Washington, surrounded by Clarkston, Spokane, Moses Lake, and Pasco. His joint Contracts were shared in a checkerboard manner, and there is no record of him ever using a compassman. He notarized all of the oaths.

For some reason his last Contract, Number 270, has copies of rejected plats of 40 township exteriors at the National Archives. Sewell's half-brother, Stephen Truax, came to Washington briefly in 1880 and received a Contract. Sewall was a Member of the Washington Territorial Council from Walla Walla in 1883-84, serving as President, and by 1889 he was living in Spokane. He was appointed an Examiner of Surveys by the GLO in 1893, and he examined 9 Contracts in Washington. Sewall died in Spokane in 1894 of cirrhosis of the liver. His children were well educated. He has papers at OHS. See WA GLO Surveyors for the maintained version of this information.

---

**True, Edward  
Blanchard**

1850-1913

Dem

USDMS

Mineral Survey 1881  
Contract 28

to

no more

Born in Maine, graduated from Tufts University in 1872, and was living in Lewiston, Idaho in 1880. Married Evaline Aitken in Hailey in 1884, but she died bef 1910. Active Mineral Surveyor in 1891, lived in Hailey, Idaho 1882-91. A State Legislator and ran for U. S. Congress as a Democrat in 1892 and lost against the incumbent Republican. Married again to Eva Hamblin from Maine in 1897, but she died by 1910.

---

**Trumbull,  
Charles**

1846-1917

USDMS

Mineral Surveys 1891  
to

no more

Born in Illinois, Charles enlisted in the Civil War in 1862 from Illinois and was discharged in 1865. He was a civil engineer in Alameda, California in 1889 and served as a USDMS in Idaho from Spokane in 1891 and 1899. Charles was an engineer of GNR in Spokane in 1902, and at that time he was named the assistant engineer in the State Land Office in Olympia. He had returned to Spokane in 1908-10 as a civil engineer. Charles checked into the disabled soldiers home in California in 1917 and died there in 1917 soon thereafter.



---

## **Turley, Omner Jay "Jay"**

*1877-1942*

USDS

Contract 199 (with 1899  
William Alley)

to

no more



Member ASCE. Born in Utah the older brother of Walter Jay Turley, Jay ran away from home to attend Oregon State College in 1894, but did not graduate. He was in Idaho as a member of the Idaho National Guard from 1894-98. Jay was a crewman for William Alley in 1898 and received a Joint Contract with him in 1899 for 16 townships near Rexburg.

The exteriors had been surveyed by J. L. McCoy of the Benson Syndicate, and they all had to be retraced or resurveyed. They both signed all the oaths. Jay was bonded as a USDMS in Idaho in 1899, but did not finalize a plat. He was noted as a civil engineer in Meridian, Idaho in 1900. He was a Deputy Surveyor in New Mexico from 1900-06 and moved to Santa Fe by 1906. He married Urna Bradford Hickox in Santa Fe in 1904. Beginning in 1901, he was an active engineer in irrigation projects and court disputes, including projects on the San Juan river. He was a civil engineer with his brother in Turley, New Mexico in 1911. Jay was admitted to the bar in New Mexico in 1916 and to the U. S. Supreme Court in 1921. From 1917-19 he was a Captain in the U. S. Engineers at Fort Lewis, Washington.. Jay received more education at the University of Texas and George Washington University.

---

**Turley, Walter  
Guy**

*1881-1966*

USDS

Contract 253 (with 1904  
Oscar Sonnenkalb)

to

no more



1905

ID PLS 89. Born in Idaho, the brother of Jay Turley, Guy was a chainman on his brother's Joint Contract with William Alley in 1899. He received his only Contract in Idaho in 1904 with Oscar Sonnenkalb for 5 townships North of Grangeville and they shared the work. . Guy graduated from the University of Idaho in 1905 in Civil Engineering, and he was noted in geological research papers shortly thereafter, associated with the University. He was a civil engineer at both Turley, New Mexico and Farmington, New Mexico in 1906 and was a civil engineer at Aztec, New Mexico with his brother in 1911. Jay worked for the government in Rio Arriba in 1918, for the City of Santa Fe as a civil engineer in 1920 and in private practice there in 1930 and 1940. He was an engineer in Santa Fe and died there in 1966

---

**Turner,  
Franklin P.**

USDS

Contract 235 1902

to

no more

---

**Utter, Darwin****A.***1860-1935*

Surveyor General 1908

to

no more



ID PLS 14. ID PE 158.

Darwin was born in Pennsylvania, raised on a farm in Michigan, and educated at the University of Michigan in Civil Engineering until 1881. He married Margaret "Maggie" Kimbell in Michigan in 1884. He was a surveyor and an inspector of timber and mineral lands in the years after school, before becoming a supervisor of construction for UPRR in the Northwest. He opened his own engineering office in Weiser, Idaho in 1899, where he began the private practice of civil engineering for five years.

He was elected Washington County Surveyor in 1900 and also appointed as a U. S. Deputy Mineral Surveyor in Idaho in that year. His projects included the electric light and power plant, a new sewer system and the Weiser Irrigation District. Darwin expanded to do irrigation-canal projects in other locations of the state, and as Chief Engineer for the Dead Ox Flats District, he refined the process of pumping water from the Snake River. As Chief Engineer for the Chicago and Northwestern RR, he surveyed a railroad from Huntington, Oregon to Homestead, Oregon, up the Snake River. He then continued that survey to Lewiston.

During the Spanish-American War, Darwin was a special agent and visited all the important seaports of the world. In 1904, he received a Contract by Special Instructions from the Oregon Surveyor General to survey Porters Island in the Snake River just West of Weiser. He was examined in 1905 and approved.

Darwin organized the Idaho Society of Engineers and Surveyors in 1908, which transformed into the Idaho Society of Engineers in 1910. He was the first President for two years. Darwin was also appointed the Surveyor General of Idaho in 1908, and was reappointed in 1912. During his first term, it is reported that he perfected the Direct System of Surveying, and had an Idaho Senator file legislation to make it law. This required the surveys to be done by direct employees of the government, rather than Contract surveyors, and required the use of brass caps at corners. It was adopted in 1909, effective in 1910.

In the spring of 1913, after retiring as Surveyor General, Darwin completed a seven-month tour of the Orient. He was sent out by a syndicate of timber interests and capitalists to analyze the possibilities of harvesting commercial timber in the Philippines. They had secured a 1000 square mile concession for timber harvest in The Philippines. Darwin would make several trips to Manila over the years. In 1916, he accepted the office of U. S. Land Commissioner at Mountain Home and had an office there until 1923. He was also a Justice of the Peace, trying many cases, including at least one for murder. During this period, he was publishing poetry in the Mountain Home Republican.

He was still with Maggie in 1920, but was alone in 1930, listed as a widower. After 1920, Maggie and their daughter, Emma, were living in Boise, where Emma was going to high school. Darwin quit his position of U. S. Commissioner in March, 1924 and announced he was moving to Colorado. Maggie did not go with him. After another trip to Manila, Darwin was listed in Colorado as marrying Matilda Hoff in August, 1924, just after his return. That is the only source for his middle name being Averell. He was absent from Mountain Home until at least 1926. He married again to Emma L. Blunk in Jerome, Idaho in 1931. Darwin was a civil engineer continuously until his death at. He died of cancer in Mountain Home in 1935.

---

**Van** ID PLS 94.  
**Schravendyk,**  
**Henry A.**

USDMS  
 Mineral Surveys =GLO  
 to  
 no more

---

**Vaughn, Zenas**  
**N.**

USDMS  
 Mineral Survyes 1902  
 to  
 no more

---

## Vernon, Joe

USDS

Special Instructions 1909

to

no more

---

## Voight, Emil F.

1857-1927

USDMS

Mineral Surveys 1891

to

no more

Emil was born in Germany and was in Baker City, Oregon by 1886 when he married Mary A. Downie, the daughter of a long time miner. He began Mineral Surveys in Oregon in 1888 in Union County in the Granite Mining District, and between then and 1894, completed 32 Surveys involving 49 Mining claims. They were all out of Baker, and most were in the Sumpter Mining area. He usually used a different crew on each survey, and used his brother-in-law, Archie Downie on a few. He surveyed a Placer Claim for his father-in-law, which was named after his mother-in-law.

He then worked as a mining engineer in Rossland, B. C. before coming to Princeton, B. C. in 1898. Emil was noted in the Yale-Cariboo area in the 1911 census. He was a mining engineer at Princeton, and he and his wife filed many Claims, becoming the "King of Copper Mountain". All 52 of their Claims were sold after his death at Princeton, because he had refused all sales while he was alive. Grandby Mining Company had been mining on Copper Mountain for some years before Emil died.

The current aerial photography of Copper Mountain shows a nearly 3000 acre open pit mine. Emil and Mary are buried in a small, remote cemetery near the top of Wolf Hill. Their son, Victor, is buried between them, and Emil's horse is buried nearby. In the next 70 years, over six billion dollars of copper would be extracted from that Copper Mountain site. He is the namesake of Voigt's Camp, British Columbia, and he named nearby Victor Lake after his deceased son.

---

**Waite, Daniel  
Walter**

1854-1907

EX

USDS

Special Instructions 1892

to

no more



Born in Wisconsin, Daniel was at home until 1879 when he married Harriet Jane "Hattie" Stevens in Wisconsin, and they had four children. He was Dunn County surveyor there for 27 years, beginning in about 1880. There are many newspaper stories about his surveys over that time. He was appointed a Special Examiner of Surveys to at least examine Contract 137 of Frederick J. Mills in 1892.

Several months later Daniel was named to examine the survey of Amos Robinson on Contract 138. In 1893, Daniel received Joint Contract 154 with John R. Stephenson for 10 townships Southwest of Orofino, and they were all surveyed by Daniel. They also received Contract 156 for three townships and a Standard Parallel in the same year and that was also surveyed by Daniel. Daniel did up the notes in Wisconsin and they were notarised in by the county clerk there. Daniel returned to Wisconsin and received a Contract there to survey an island in a lake. His signature was the same as the Idaho Contracts. He was a surveyor in the 1900 and 1905 censuses. Daniel died in 1907 by falling down the back stairs of the Olson boarding house after midnight on a Friday in Menomonie, He fractured his skull and was not discovered until morning.

---

**Waldron,  
Joseph W.**

USDS

Contract 245            1903

to

no more



Frank served a Special Examiner of Surveys in at least Oregon in 1902, examining three Contracts and was reported in the newspapers as surveying part of the boundary of Crater Lake National Park. Frank moved on to Alaska in 1903, where he was again a Special Examiner of Surveys, and among other things, reported on the locations needing the extension of surveys in 1904. Howard Carpenter was awarded a Contract in 1904 under Special Instructions to survey over 700 miles of the Boundary of Idaho and Montana that follows the watershed line of the Bitterroot Crest. Frank was his transitman for the 21 man crew, and the survey took four seasons to finish. It appears Frank spent the winters surveying in New Mexico.

Frank joined the Direct System in 1911, and spent a lot of time in Alaska, where he surveyed the plats of Anchorage in 1915 and Girdwood in 1918. Jennie and their daughter were living in Los Angeles in 1920, with Jennie listed as married, but not with Frank, who was in the Register of 1920 as promoted to Assistant Supervisor of Surveys (Head) in some GLO District(s) that included Alaska. Frank died in Los Angeles in 1924, with Jennie eventually buried beside him some 30 years later. Jennie had a widowed twin sister living with her from 1930 on, and she is also buried next to her.

---

**Way, I. M.**

**Mrs.**

-1897

Dr/Clerk

Clerk                      1897

to

no more

---

**Wenz, Edward**

Born in North Dakota

**L.**

Dr/Clerk

Clerk                      1909

to

no more



---

**Westcoatt,  
Oscar King**

1851-1923

USDMS

Mineral Survey 1882  
to  
no more

Born in Iowa, the son of a civil engineer, Oscar was in Nevada in 1877 where he surveyed the townsite of Royal City and in Idaho in 1882 where he surveyed one Mining Claim in Warm Spring MD. Oscar married Effie Eugenia Parsons in Petaluma, California in 1984, and they had two children. He was based in California for most of his career, but worked quite a bit in Nevada. He was a mining engineer in Imlay, Nevada in 1910 and a stationery engineer at the Castilleja Private School in 1920 in Santa Clara.

---

**Weston, James  
C.**

1857-

USDMS

Mineral Surveys 1887  
to  
no more

Born in England. Lived in Galena, Idaho in 1887

---

**White, David  
M.**

USDS

Contract 137 (with 1892  
W. Clayton Miller)

to  
no more

---

**White, Rush  
Jacob**

1876-1937

USDMS

Mineral Surveys 1900  
to  
no more

Member AIME. Rush was born in Iowa but moved with his parents to Spokane in 1890. He graduated from Spokane High School in 1895, and then apprenticed as an assayer, working in British Columbia for Byron Riblet, and then for the Washington Water Power Company. He entered the Colorado School of Mines for one year, and came back to Spokane to work for the WWPC again. In 1899 he moved to Wallace, ID, to work as a mining engineer until 1901, when he went to Chelan as chief engineer for the Chelan Transportation and Smelting Company.

While there, he surveyed and built 14 miles of narrow gauge RR and surveyed 7 Mining Claims. After that company went out of business, Rush returned to Wallace to stay in 1904, and to work up the ranks of the Federal Mining and Smelter Co., until 1910 when he became general superintendent of all of their operations. Rush married Marietta Brown in 1903 at Chelan, whose father was in the electric power business. By 1917, he worked as a consulting mining engineer out of Wallace, directing mining companies, publishing professional articles and doing community work.

He was the Secretary of the Coeur d'Alene Mining Syndicate in 1921 and was elected to the Idaho House of Representatives from 1925-1932, where he was chairman of the Appropriations Committee. His son, Norman, graduated as a Mining Engineer, and worked in South America, Idaho and Montana, including some times with Rush. Rush died in 1937 of stomach cancer at age 60, and had lived in Osburn, Idaho for the last 12 years. Marrietta died in Gregson, Montana in 1967, where she was living with Norman

**Whitthorne,  
Francis Clinton  
"Frank"**

1876-1936

Dr/Clerk

Clerk

to

no more

1898

Francis was born the son of an attorney and Confederate officer in Tennessee. He graduated from the University of Tennessee, and by 1897, he showed up as a Clerk in the Surveyor General's Office of his uncle, Democrat William P. Watson. He was the brother of William J. Whitthorne, Jr. Francis left for Tennessee when William Watson was replaced in 1898, and he was living at home selling insurance in 1900. He was transferred to the Surveyor General's Office in Boise for three months in 1898. He married Awilda Spaulding in 1904, and by 1907, he was working for the Florida Times-Union in Jacksonville, Florida, for whom he worked for many years. While there he was mostly circulation manager, while Awilda was the Palatka correspondent. They lived in Palatka, which is where they died.

**Wickersham,  
David B.**

USDS

Contract 254 (with 1904  
William Alley)

to

no more

---

**Wickersham,  
James H. Jr.**

Born in Idaho

Dem

Clerk 1895

to

no more

---

**Wightman,  
Willard  
Humphrey**
*1852-1889*

USDS

Unknown Contract 1886

to

no more

Member ASCE. Willard was born in New York, and after being educated in the public schools and Mexico Academy, he graduated from Cornell in Civil Engineering in 1881. He was an engineer for UPRR in 1881-84 and then for NPRR in 1884-86 as office draftsman and a Resident Engineer on the Cascades Division. Willard apparently made a deal with fellow railroad engineer Albert Hammond to get Survey Contracts for 15 desolate townships Southwest of Crowley in Malheur County. The two Contracts were awarded on the same day in 1886, and the townships were intermingled. As it ended up, Albert surveyed his townships and was the Compassman for Willard on the others. They were surveyed in 1886, examined and eventually approved in 1888 after some corrections.

His memorial noted that he was a U. S. Deputy Surveyor in Idaho about the same time in the winter of 1886-87. He then returned to UPRR in 1887, where he worked as an Assistant Engineer and Superintendent in charge of construction on the Kennewick Bridge at Pasco. Still with NPRR, he was in charge of construction for the RR from Marshall to Genesee, a distance of 106 miles. In 1888 he was Assistant Engineer on the Spokane and Palouse RW, continuing until he contracted the measles in 1889. It caused a severe cold, which morphed into pneumonia, causing his death in October 1889 in Ashland. It appears he never married.

---

**Wilkes,  
Charles S.**

USDS

Contract 141 (with 1892  
Thomas A.  
Perkins)

to  
no more

---

**Wilkes,  
Edmund**

USDMS

Mineral Survey 1879

to  
no more

---

**Wilkes, Lincoln  
Ellsworth**

1865-1944

Dr/Clerk

Special Instructions 1904

to  
no more



OR PE 1046. Lincoln was born in Oregon, lived almost his entire life in Washington County, Oregon, and noted on the 1940 census that he attended college for two years. He married Elizabeth Soehren in 1892 and was Washington County Surveyor in 1894-96. Lincoln received a Contract by Special Instructions for one township northwest of Forest Grove in 1888 and Contract 598 in 1892 for one township in very Northeastern Tillamook County, and he used a brother and two new brothers-in-law on his crew.

---

**Wilkinson,  
John F.**

USDMS  
Mineral Surveys 1895  
to  
no more

---

**Williams,** Lived in Silver City, Idaho in 1899.  
**Robert C.**

USDMS  
Mineral Surveys 1899  
to  
no more

---

**Wilson, E. H.** Lived in Burtte, Montana in 1887

USDMS  
Mineral Surveys 1887  
to  
no more

---

**Wilson, George** Lived in Phillipsburg, Montana in 1899.  
**W.**

USDMS  
Mineral Surveys 1899  
to  
no more

---

**Wilson,** 6  
**Howard S.**

Contract 207 (with 1900  
Herman D.  
Gradon)  
to  
no more

---

**Wilson,**  
**Llewellyn**  
**Almond "Lew"**

*1860-1920*  
USDS  
Contract 323 1910  
to  
no more



ID PLS 235. Born in Iowa, Lew came west to Walla Walla with his family, including his brother, John B. Wilson, in 1868. Lew was a civil engineer in Walla Walla in 1880 and married Anna Crawford in Walla Walla in 1884. Lew was Walla Walla County Surveyor and Walla Walla City Engineer in 1886 and 1890. He was Compassman for a portion of the survey of Adrian Wisner in 1887 for 7 townships South of the Spokane Indian Reservation and East and West of Deer Park.

Adrian did not distinguish among the four crews he used on this survey. One crew included Compassman John Zimmerman, and another included Compassman Lew Wilson. The survey was examined by John Sharry. Lew moved to Tacoma in 1889 where he briefly worked as a civil engineer and land locator, and was an engineer again in Walla Walla in 1892 and 1900.

Lew received a Contract for the survey of one township East of Mineral in 1897. He broke his leg in 1897 on that job and had to ask for an extension of the Contract until the next year. He started using his son, Howard, as a flagman at age 11. The Surveyor General again appointed him as Compassman to finish the survey of Edward Dobbs, who was in the Army in the Philippines. This was for one township in the Blue Mountains, but for a year he never started the work, and the Contract was cancelled and reissued to Lew in 1901. An exam by M. P. McCoy indicated the bearing trees for the 1/4 corners were marked wrong, and Lew went back in 1903 and remarked them all. He was a chainman for Edwin Clark in 1903 South of Pomeroy. Lew surveyed another Contract for one township Southwest of Cle Elum in 1901 and was examined by M. P. McCoy without problems.

Lew surveyed two Indian Allotments North of Riverside in 1907, a township at Oroville in 1907, two townships at Cle Elum Lake in 1907, one township at Mt. St. Helens in 1909, one township West of Priest Rapids in 1909, and one township Northeast of Marblemount in 1910. Howard continued working on the crew until 1907 when he was 21. All of these surveys were competently examined by various examiners, and it appears that Lew did not have to return to the field. He did have lots of correspondence, and plat and note corrections. Lew was also listed as a chainman for brother John in 1908, and was awarded a Contract in Idaho while living in Boise in 1910. He was the only candidate for Boise County Surveyor in 1912, while living in Montour. He died in Boise in 1920.

---

**Winwood, Job**

**Henry**

1875-1952

USDMS

Mineral Surveys 1907

to

no more



1947

Member AIME. Born in England, Job arrived in the U. S. in 1884 and attended college for four years at Michigan School of Mines. His father died in Salt Lake City in 1897, and Job was a mining engineer in Butte, Montana in 1908. He married Katherine Fisher there in 1904 and they were living in Salt Lake City in 1908. He was a mining engineer in Salt Lake City for the rest of his life. Katherine died in 1938 and Job in 1952.

---

**Wood, Robert**

**John**

1871-1944

Dem

USDS

Contract 306 1903

to

no more

Born in Ohio, John attended the Michigan School of Mines for two years. He married Louise Katharine Whitemen in 1894 and they had one daughter. He was a postal Clerk in Ohio in 1900 and came to Idaho in 1907 where he went into partnership with his brother until at least 1914. In 1910 John was named City Engineer of Weiser and under that role built water mains, sewers, streets and sidewalks. By 1940 at age 68, he was Postmaster there. He died in 1944 in Weiser.

---

**Woodburn,**

**John M.**

1859-1917

Dem

USDS

Special Instructions 1903

to

no more

Born in Philadelphia, the son of a lawyer, John graduated from Jefferson Medical college in Philadelphia and was a physician in Boise in 1881 and 1900. He was a physician in Rexburg, Idaho in 1903, when he received Special Instructions to survey three sections on the Snake River just outside Rexburg. He left for Lewiston in November, 1903, and the work was given to Joseph A. Clark. John practiced briefly in Lewiston and then moved his practice to Stites in 1904 on the upper Clearwater. He was an active Democrat and spoke around the state on the "Mormon Question" and campaigned for Democrats. He was a physician in Boise in 1910 and died there in 1917.

---

**Worthington,**

**Irving**

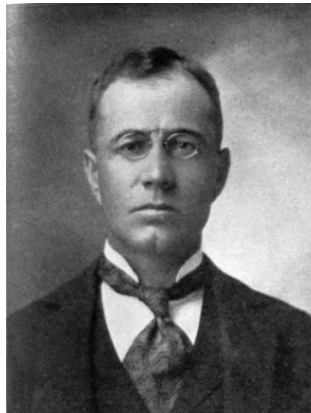
1868-1928

USDMS

Mineral Surveys 1900

to

no more



Member ASCE 1914. Born in Minnesota, Irving was in Dakota Territory with his family from 1878 until 1890, where he attended high school and one year of college. He was a chainman for John Ashley at Ruby in 1891, and for Albert Gray for 4 townships East of Grand Coulee, also in 1891. He was one of a group of Deputy Surveyors operating out of the Spokane County Surveyor's Office of John Ashley from 1891-93.



The others included John Ashley, Dekalb Ashley, Harry Clarke, Edward Hooker, Ulysses Hough, and William Maxwell. Both John Ashley and Harry Clarke had strong Benson Syndicate ties. In the Ruby survey, John Ashley made a 35 chain error crossing Lake Palmer. Irving was a deputy county surveyor in Spokane from 1892-93 under John Ashley, and in private practice from 1893-1905 in Spokane, Idaho and Montana as a civil and mining engineer.

Irving received his own Contract in the fall of 1892 for three townships and 18 miles of Standard Parallel on Lake Chelan just up from Manson, and asked for an extension of time. He surveyed it in 1893 and turned in the results. After he corrected the field notes, it was examined by Henry Newby in 1894, resulting in unknown corrections in the field in 1894. There are no separate notes for this, and it may have been remonumentation only. It was accepted in 1896. His brother, William, was a chainman.

He received Contract 458 in 1895 for one township at the same place, and it was surveyed the same year. William was again a chainman as was Harold Hooker, the brother of Ed. Contract 508 for one township at Pateros was surveyed in 1897 and went through several exchanges of the field notes until approved in 1900. A. W. Morris and David Kinnaird were examiners, and Irvin's 15 year old brother, Lewis, was a chainman. There was no exam and it was approved in 1896.

From 1897-1904, Irving surveyed Mineral Claims. He surveyed two at Curlew and one at Northport in 1897; 13 Claims near Cascade Pass in 1898; 20 Claims from 1898-1904 North of Stehekin; 13 Claims at Republic in 1899; 1 Claim in Grant County, Oregon in 1900; and 2 claims on the San Poil River in 1901. His brother, William, was a frequent chainman, and U. S. Deputy Mineral Surveyor Frank Stanley was a chainman

Irving married Francis Clare "Fannie" Brattain in Spokane in 1900, and they lived in Stehekin in the summer of 1900. She had attended three years of college, and they had four children. He published a map of the Methow Valley the same year. His last Contract was for 25 miles of Standard Parallel and 5 townships at the North end of Lake Chelan. Irving completed the surveys in 1902, turned in the notes in 1903, and was approved the same year. Irving said he had purchased Robert Whitham's compass, and did not need it examined, but lost that argument.

One month after John Wetzel received approval of Contract 599 for two townships at Oroville, he asked for permission to use fellow Spokane surveyor, Irving Worthington, as compassman, and it was granted. Irving made the survey in 1903, and after several exchanges of the field notes, the Contract was approved in 1906.

By 1910 Irving was in Medford, OR, as an engineer for the Rogue River Irrigation Co., and Osgood and Cummings. He was in Umatilla County, Oregon in 1912, and in 1914 he was in Fresno as an engineer on irrigation projects for the Fresno Canal and Irrigation Co. In 1919 Irving was named a field engineer for the Columbia Basin Project on the Wenatchee Lake Project. He was an engineer in Spokane in 1920, and also worked as an appraiser for the Federal Land Bank. He died in Spokane in 1928, and Fanny returned to teaching school, at Tunk Creek in 1930 and Nighthawk in 1940, both in Okanogan County. She died in Marin County, California in 1969 at age 95. (biography) This is the maintained version of this information.

---

### Abbreviations

Abbreviation	Name
USDS =	United States Deputy Surveyor
USDMS =	United States Deputy Mineral Surveyor
USS =	United States Surveyor (Employee of another agency)
Astr =	Astronomer
IAA =	Indian Allotting Agent (Employee of Office of Indian Affairs)
Comp =	Compassman
SES =	Special Examiner of Surveys (Hired by the Commissioner)
EX =	Examiner of Surveys (Hired by the Surveyor General)
S G =	Surveyor General
Ch Clerk =	Chief Clerk in Surveyor General's Office
Dr/Clerk =	Draftsman/ Clerk in Surveyor General's Office

Rep	Republican
Dem	Democrat
Whig	Whig
Peoples	Peoples
Union	Union
Ind	Independent
Prohib	Prohibition
Free Soil	Free Soil
Fusion	Fusion
Greenback	Greenback
Populist	Populist
Socialist	Socialist

